



Crochet twisted necklace with wire and beads



Equipment:

- 26 gauge wire x approx. 12 mtrs (you can use a thicker gauge 24,22,20 but it is hard on the hands. A thinner gauge 28, 30 can snap)
- Size 3.5 to 5 crochet hook
- 2 cones
- 1 toggle clasp
- 2 x 3mm round spacers
- 3 x 2mm round spacers
- 18g wire (approx. 2 x 10cm lengths will be needed) The colour of the wire needs to match the clasp (20g can be used)
- Assorted beads no bigger than 12mm and seed beads no smaller than Sz 8 (you can use bigger or smaller beads once you have mastered the basic techniques)



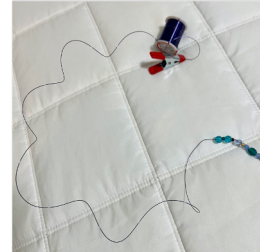


Steps:

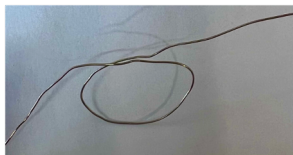
1. Decide what beads you wish to use. A mixture of these beads can be placed in a container.



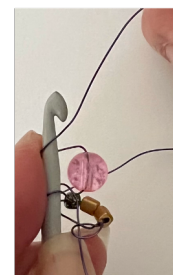
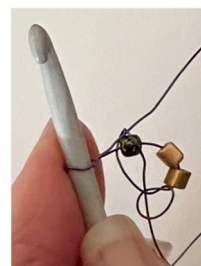
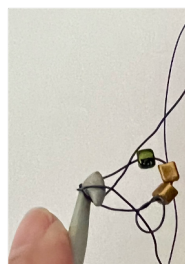
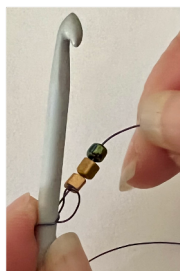
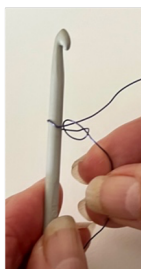
2. Choose the colour of your wire.
3. Thread 3 metres of the mixed beads onto the wire. If you unwind the wire a little bit at a time it makes it easier to manage. You can use a clamp or blue tac to secure the end if needed.



4. Do not cut the wire after threading the beads because you will be continually pushing the beads down the remaining wire when you are crocheting the beads.
5. Leave 20cm of wire at the beginning.
6. Make the first single crochet.



7. Push one larger bead or 2/3 smaller beads up the wire.
8. Make a single crochet.
9. Push the next bead/beads up the wire.
10. Make a single crochet.





11. Continue until the single crocheted beads measure 4.7mtrs or you have a 20cm length of wire left. If there are more beads on the wire after you have measured 4.7mtrs you can remove the beads or continue crocheting the beads until you have 20cm of wire remaining.
12. Pull the wire through the last single crochet to end.



13. Fold the length of crocheted beads in half. There will be a double layered strand.
14. Fold the double strand in half. There will be four layered strands.



15. Carefully, hold both ends of the **four layered strands** to determine the general length and thickness of the necklace. Remember this is not the finished design. It is to determine the general length and thickness. The finished necklace will be a bit shorter because the strands will be twisted together. You will need to take this into consideration when determining the length.
16. If you would like the necklace shorter and thicker. Fold the four strands in half. There will be eight layered strands.

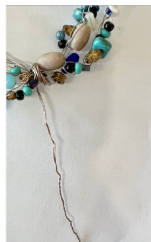


17. Carefully, hold both ends of the **eight layered strands** to determine the general length and thickness of the necklace. Remember this is not the finished design. It is to determine the general length and thickness. The finished necklace will be a bit shorter because the strands will be twisted together. If you determine that the necklace length is too short then refold the original strand in thirds, that is, **three layered strands**. Holding both ends and folding in half until you have **6 layered strands**. Hold up and look in mirror to look at the length. Remember, the finished necklace will be a bit shorter because the strands will be twisted together.

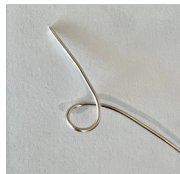




18. At the end of the layered strands twist the ends of the 20cm wire together. Wind the twisted wire through the ends of the strands. Create a wrapped loop with the 26g wire. Repeat this process at the other end of the layered strands.



19. Cut two 10cm lengths of 18 gauge wire.
20. Thread one 10cm length of 18 gauge wire through the ends of the layered strands and the wrapped 26g wire loop. Create a wrapped 18g wire loop leaving a long length of wire at the end of the wrapped loop.



21. Repeat the process in Step 20 with the other end of the layered strands.
22. Hold onto each end of the 18 gauge wire near the wrapped loop and twist one end of the necklace clockwise and the other end anticlockwise. The crocheted beads will bunch together.





23. Lightly crush the necklace with your hands to secure the beads.
24. Thread the 18 gauge wire at one end of the necklace through a cone. Push the crocheted bead up into the cone.



25. Tread 2 x 3mm round spacers onto the 18 gauge wire
26. Tread 3 x 2mm round spacers onto the 18 gauge wire



27. Create a wrapped loop making sure you add the toggle end before wrapping the loop



28. Repeat the process with the other end of the necklace



29. You can make the necklace slightly shorter or slightly longer by gently crushing or gently pulling the necklace.



CREATZU
UNIQUE CREATIONS

CAROL MARSHMAN
FASHION JEWELLERY

